

EYE KANDY – Your Time to SHINE

Eye Kandy is the NEW revolutionary EYE & BODY GLITTER that is adding star studded sparkle & shine across the world.

Eye Kandy is Safe for Every Age! It contains no metallic's or glass and is safe for sensitive skin and contact lenses.

Our secret is our STAY PUT BASE.

Eye Kandy uses the AMAZING LIQUID SUGAR as an adhesive base. Liquid Sugar is water based and is safe for all skin types.

Once glitter is applied it will Stay On All Day!
No Flaking!

Eye Kandy is an excellent product for dancers and performers, and is ideal for every day and evening wear.

GLITTER can be worn BOLDER for a more intense look or SUBTLE for a daytime or office look.
Eye Kandy can be applied as a liner or all over the eye for a more intense and noticeable look.

For extra sparkle, our glitter can be worked as an all over BODY SHIMMER. After applying lotion or moisturiser to your skin, lightly dip a powder brush into a pod of glitter and dust over your body.

Glitter can be worn over lipstick or gloss. Use a thicker lip brush, dip into base, then into glitter and brush over lips. Allow to dry before touching lips together.

Use more than one colour. Use over eye-liners, and shadows. Create awesome body art!

Product Usage

USE:

Liquid Sugar is a water based sealer that bonds glitter, metallic's and micas (powder make-up) to your eyelids, lips or any other skin surface. This product is safe for sensitive skin and contact lenses.

Application Procedure:

Choose your colour and glitter type.
Eye Kandy Special Shimmer glitters are marked with (S)

Gently squeeze a small amount of Liquid Sugar into lid. Dip your brush into the Liquid Sugar, slide along rim to remove excess liquid. Disperse the glitter colour through the pod sifter into the rim of the pod by gently tilting and tapping the side of the pod. Dip your brush into Eye Kandy Glitter and apply like a liquid eyeliner. When applied, eyelids may feel tight at first, but product loosens up within minutes. Be careful not to apply too thick. .

DRY TIME:

This product will take 30-60 seconds to air dry depending on how thickly it is applied.

REMOVAL:

Washes off easily with soap and water.

Helpful Hints

Dark eyeliner is necessary to apply under dark glitters (black, brown, red, etc). You will use less glitter and avoid having your eyelid show through. You will see incredible results with more sparkle and shine!

When using the Sugars, try to match an eye shadow before applying. Use more liquid and less glitter and apply a sparse layer quickly across the eyelid. This is an amazing look! Attention getters - Using this method, apply any of the glitters over lipstick.

If glitter is "balling up" apply a small amount of Liquid Sugar to your brush and smooth out the liner. Applying mascara after glitter application works best.

Body Shimmer

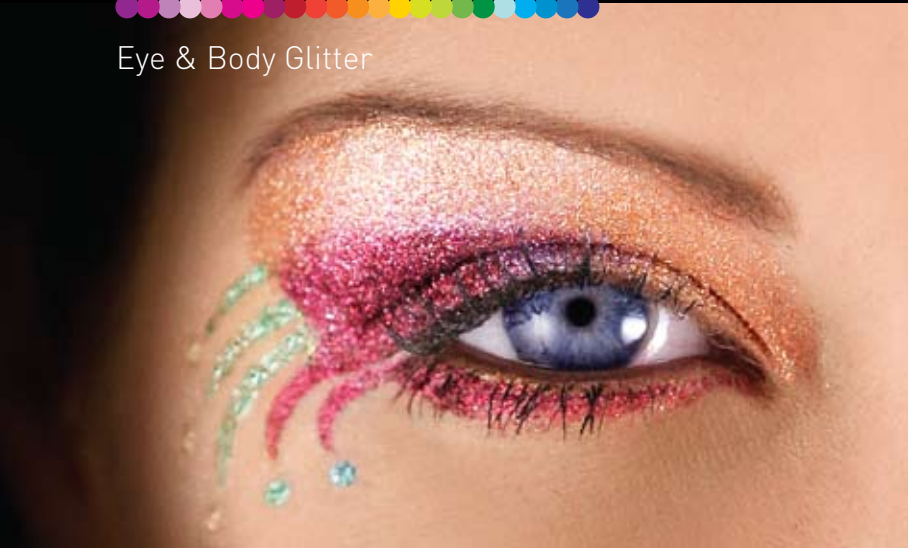
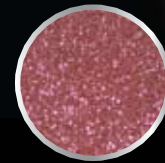
Simply brush or sprinkle glitter on after applying lotion or use the base for a more intense look. You can also stencil or paint on swirls, designs, etc.

BE CREATIVE! Glitter is FUN!

EYE KANDY™



Eye & Body Glitter



Experience the EYE KANDY EVOLUTION

ALL DAY STAY – Breakthrough 'Stay Put' Base

FLAKE FREE

SAFE ON SKIN – no metallics or glass

FAST DRY & EASY TO APPLY

60 HOT & FUNKY fashion colours

Get Blinged!

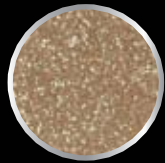
Bring out the SPARKLE in your Eyes

Use as a BRILLIANT, face & body SHIMMER

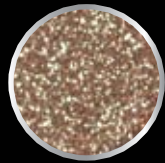
Eye Kandy.... Your time to shine



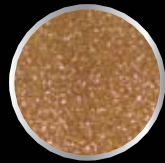
Image Addict Australia Pty. Ltd.
456 Sydney Road, Brunswick VIC 3056.
P (03) 9387 9602 F (03) 9387 8051
www.eyekandy.com.au



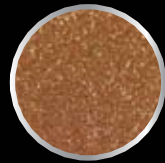
Honey Drop



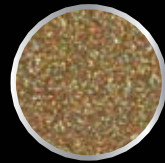
Candy Coin



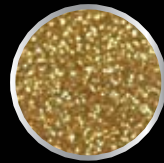
Butterscotch



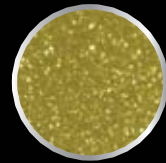
Candy Corn



Yellin' Melon



Bananarama



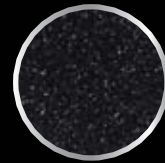
Citrus Twist



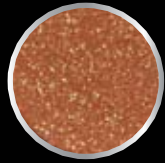
Sugar Cane



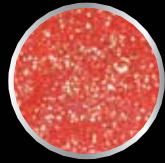
Caramel Apple



Black Bart



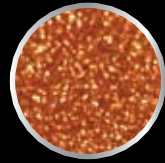
Taffy



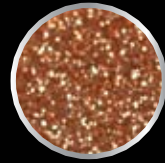
Peach Fizz



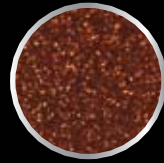
Tangerine Twist



Pumpkin Pie



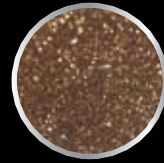
Taffy Trip



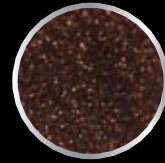
Sizzlin' Cinnamon



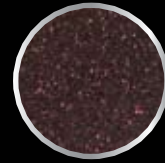
Ginger Snap



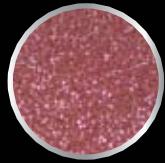
Toffee



Chocolate Trip



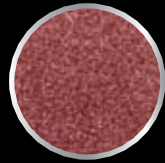
Sugar Plum



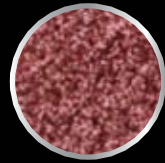
Double Bubble



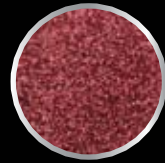
Double Trouble



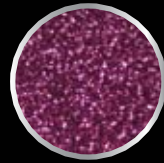
Tootie Fruitie



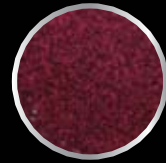
Tootie Dance



Bubble Gum



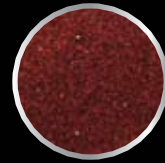
Sweet Tart



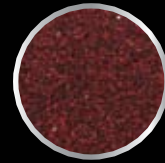
Candy Cane



Cherry Bomb



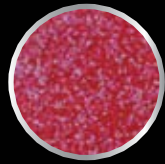
Candy Apple



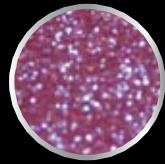
Raspberry Blast



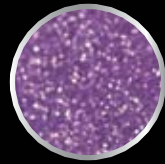
Cotton Candy (S)



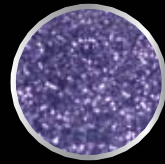
Lollipop (S)



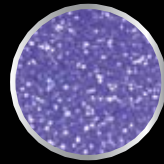
JellyBean (S)



Tiny Tart



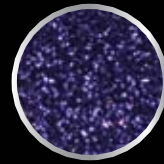
Spicy Tart



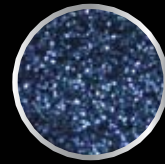
Gum Drop (S)



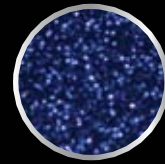
Sour Grape



Gumball



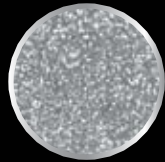
Semi Sweet (S)



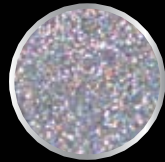
Winter Burst



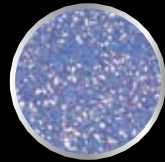
Marshmallow (S)



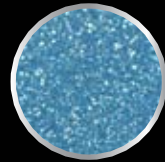
Jawbreaker



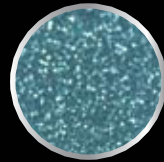
Confetti



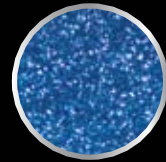
Icing (S)



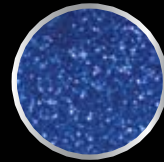
Hard Candy



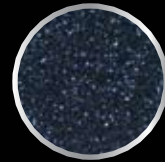
Chicklets



Sour Blast



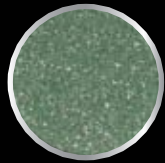
Shock Tart



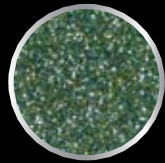
Berry Blast



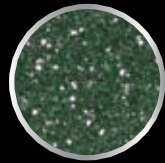
Razzle Berry



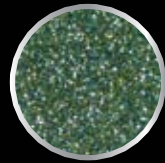
Pixie Stick



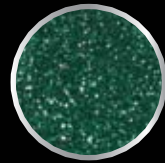
Sour Apple



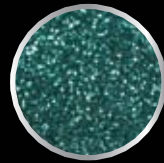
Pixie Chick



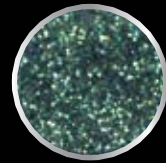
Mad Melon



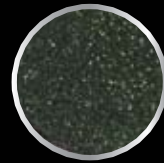
Sour Berry



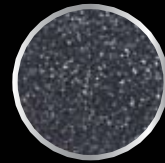
Spearmint



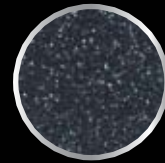
Twizzle Stick



Watermelon



Licorice Stick



Ballistic Berry